



Bailiffs move in on Rising Up protestors at the Stapleton Allotments, on land which will be used for the Metrobus

PICTURES: SIMON GALLOWAY

# Protest camp evicted from allotment site

**GEOFF BENNETT**  
news@westerndailynews.co.uk

Five weeks after a group called Rising Up made their homes in trees at an allotment site in Bristol, the last seven were removed yesterday.

The group set up the camp at Stapleton Allotments in Frenchay in protest against plans for the Metrobus that will see the land used for part of a bus route.

They say the prime agricultural land and the wildlife that lives there should be protected from development.

At noon yesterday, just six of the dozens who set up the camp remained in the trees, 60ft above the ground.

But by sundown, all had been removed, though their attempts to make it as hard as possible for the experts from Specialist Group International worked in part, with the eviction taking four days.

The two remaining female protesters had locked arms together in a 4mm thick steel tube, which necessitated the need for a hacksaw to be used to cut them free.

The eviction's conclusion brings the five-week occupation of the site to an end, though security remains tight around the formerly occupied tries which are surrounded by metal fencing.

On Saturday, campaigners occupied a plot of land on the other side of the M32. The land is owned freehold by Bristol City Council and it has been given the tenant's permission to remove the protestors, which it was due to do this morning.

Peter Faulding, chief executive of rescue team Specialist Group International, said he was pleased to report there were no injuries.

He said: "The last man used a D-lock to secure himself

around a branch. It was a very dangerous operation but we got them down safely. They actually said what a great job we did and shook our hands."

Peter Mann, service director for transport at Bristol City Council said: "Given the scale and complexity of this operation things have gone very well indeed. The specialist teams have worked with great care to make sure people have been brought to the ground safely and respectfully."

"Our hope was that we might be able to complete the process before Sunday, but as always we put people's safety and wellbeing ahead of speed."

Avon Wildlife Trust issued a statement which said it is working to secure the best ecological mitigation for the area, having objected to elements of the MetroBus scheme.

The trust stated: "We are tenants of the Feed Bristol site and as such we are not permitted to allow nuisances on our site, or to neighbouring land or landlords."

"Since the evictions began on neighbouring land there have been people occupying Feed Bristol's site without AWT's permission and causing nuisances to the neighbouring land and landlord."

Feed Bristol, a project which supports the city and its many communities in conservation and sustainable food, has lost five weeks' revenue totalling thousands of pounds and lost access to land, said AWT.



Bristol City Council was granted the right to eviction five weeks ago but the bailiffs were only sent in on Thursday. It took specialist rope teams four days to remove the dozens of protestors in the trees at Stapleton Allotments who are against plans to use the prime land for a bus route

## School bullies made Poldark star's life Hell

Eleanor Tomlinson, the star of the new West-made BBC series *Poldark*, has said childhood bullying was like "psychological warfare".

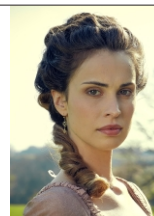
Speaking to the *Mail on Sunday's You* magazine, she said that being a pupil at Beverley High School in East Yorkshire while working on film sets was very difficult.

She said: "I was accused of being too posh because during stints away from home any trace of a Yorkshire accent would fade away."

"The bullying would take the weirdest forms. For example, people would come up to me and shout the name of the project I happened to have been working on and then just walk away."

"It's incredible how horrible girls can be. It was psychological warfare and it was really hard to cope with."

Eleanor Tomlinson was taunted at school for being 'too posh'



Tomlinson added that her past experiences helped her to play the character Demelza. "I do think that she has a fear of not fitting in, which I can sympathise with."

The new period drama of *Poldark*, which was filmed in Bristol and Cornwall, sees Tomlinson in "passionate" love scenes with Captain Ross Poldark, played by Aidan Turner.

Talking about hard it is for her boyfriend to watch, she said: "It must be especially difficult when your co-star is someone like Aidan, who looks like a god among men. But my boyfriend, bless him, does really well."

"He's a really calm person, whereas I can be a complete nutcase at times. If it was the other way round, I'd be psychotic about it."



YOUR SEVEN-DAY TV GUIDE IN **SATURDAY'S DAILY PRESS**

## Man dead at bookies' shop

A man was found dead outside a betting shop in Cheltenham on Saturday morning.

Police and paramedics were called to the Ladbroke's betting agent in Rotunda Terrace at around 7.45am.

A man in his 40s was found dead at the scene. Police are still trying to contact the next of kin.

Yesterday, a spokesman for Gloucestershire Police said: "The death is not being treated as suspicious but is currently unexplained. The matter has been passed to the coroner."